

Specifier's Guide: Concrete Pavers

Seal

Fully breathable impregnating / penetrating sealers providing premium oil and water repellence. These impregnators do not form a film and do not change the natural look or texture of the paving.

Product	Protection	Low-VOC	Lifespan
STAIN-PROOF™ Original Permanent, invisible impregnating sealer	<ul style="list-style-type: none"> Permanent water and oil-based stain repellence Efflorescence Freeze-thaw/salt spalling* 	No	15 Years** Warranty
METACRÈME™ Permanent, invisible, water-based impregnating sealer	<ul style="list-style-type: none"> Permanent water and oil-based stain repellence Efflorescence Freeze-thaw/salt spalling* 	Yes - LEED Compliant	15 Years** Warranty
Stain-Repella™ Invisible penetrating sealer	<ul style="list-style-type: none"> Water and oil-based stain repellence 	Yes - LEED Compliant	5-years†

* For softer, more, porous materials use DRY-TREAT 40SK | **If applied by an accredited applicator | † Depending on surface use & traffic



Unsealed

Sealed



Dry-Treat™
STAIN-PROOF™ Original



Dry-Treat™
METACRÈME™



Hanafinn™
Stain-Repella™

Enhance and seal

Fully breathable impregnating enhancers enrich the color of pavers and provide premium oil and water repellence. These enhancers do not form a coating like traditional enhancers and do not yellow, whiten, crack or peel. After a few years when the enhancement starts to fade, simply clean and recoat, with no stripping required.

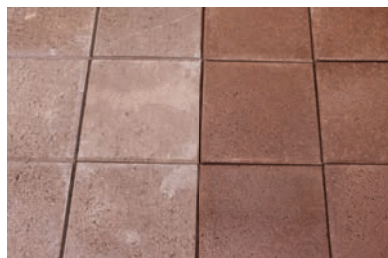
Product	Protection	Low-VOC	Lifespan
Paver-Finisha™ Color enhancer & sealer for highly porous concrete pavers	<ul style="list-style-type: none"> Premium water and oil repellence on highly porous pavers Strengthens polymeric sand 	Yes - LEED Compliant	5-year†
INTENSIFIA™ Color enhancer & sealer for medium to dense surfaces	<ul style="list-style-type: none"> Premium water and oil repellence on denser concrete pavers 	Yes - LEED Compliant	5 Year Warranty**

**If applied by an accredited applicator | † Depending on surface use & traffic



Before

After



Before

After



Hanafinn™
Paver-Finisha™



Dry-Treat™
INTENSIFIA™

For coverage rates please refer to the Product Coverage Guide to calculate the amount of product required.

Specifier's Guide: Concrete Pavers

Consolidate softer, more porous pavers

Fully breathable impregnating consolidator strengthens softer, highly porous materials by approximately 30 to 40% and creates a deep water repellent layer inside the paver.

Product	Protection	Low-VOC	Lifespan
DRY-TREAT 40SK™ Consolidator and freeze-thaw/salt spalling protection for softer, more porous materials	<ul style="list-style-type: none"> • Freeze-thaw/salt spalling • Permanent water repellence • Strengthens treated surfaces by 30% - 40% • Efflorescence 	Yes	15-year** Warranty

**If applied by an accredited applicator



Freeze-thaw spalling



DRY-TREAT 40SK™

Clean

Powerful, safer environmentally responsible cleaners.

Product	Cleans
Eff-Erayza™ Powerful, safer acid cleaner*	<ul style="list-style-type: none"> • Efflorescence • Rust marks • Grout haze • Limescale • Mortar mess • Fireplace soot
Oxy-Klenza™ Outdoor surface cleaner	<ul style="list-style-type: none"> • Stains from oil, mold, food and beverage, and leaf marks

* Prolonged exposure to acids can attack the cement in the concrete and cause damage. So, it is important to minimize dwell time on concrete surfaces by neutralizing Eff-Erayza™ as soon as possible.

Note: EFF-ERAYZA™ is acidic / corrosive and will etch and pit acid sensitive surfaces such as marble, limestone, travertine, some concrete / grout products and some metals including aluminium. Do not allow product to come in contact with any non-recommended surface.

Efflorescence removal



Before

After



HANAFINN™
Eff-Erayza™

General cleaning



Before

After



HANAFINN™
Oxy-Klenza™

A comprehensive surface maintenance guide is available on the Dry-Treat website: www.drytreat.com/quickdocs.html

For coverage rates please refer to the Product Coverage Guide to calculate the amount of product required.